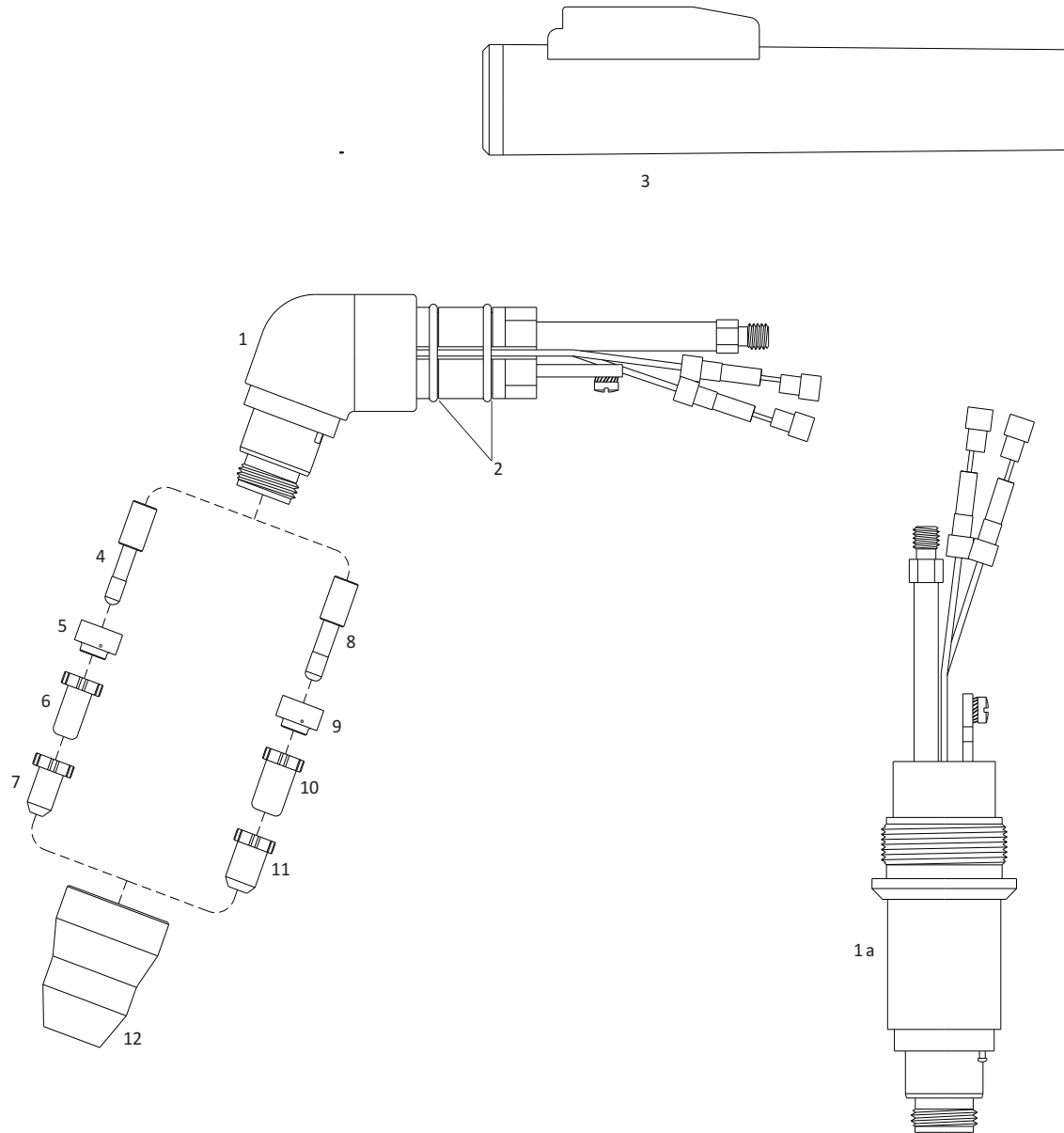


THERMAL DYNAMICS®

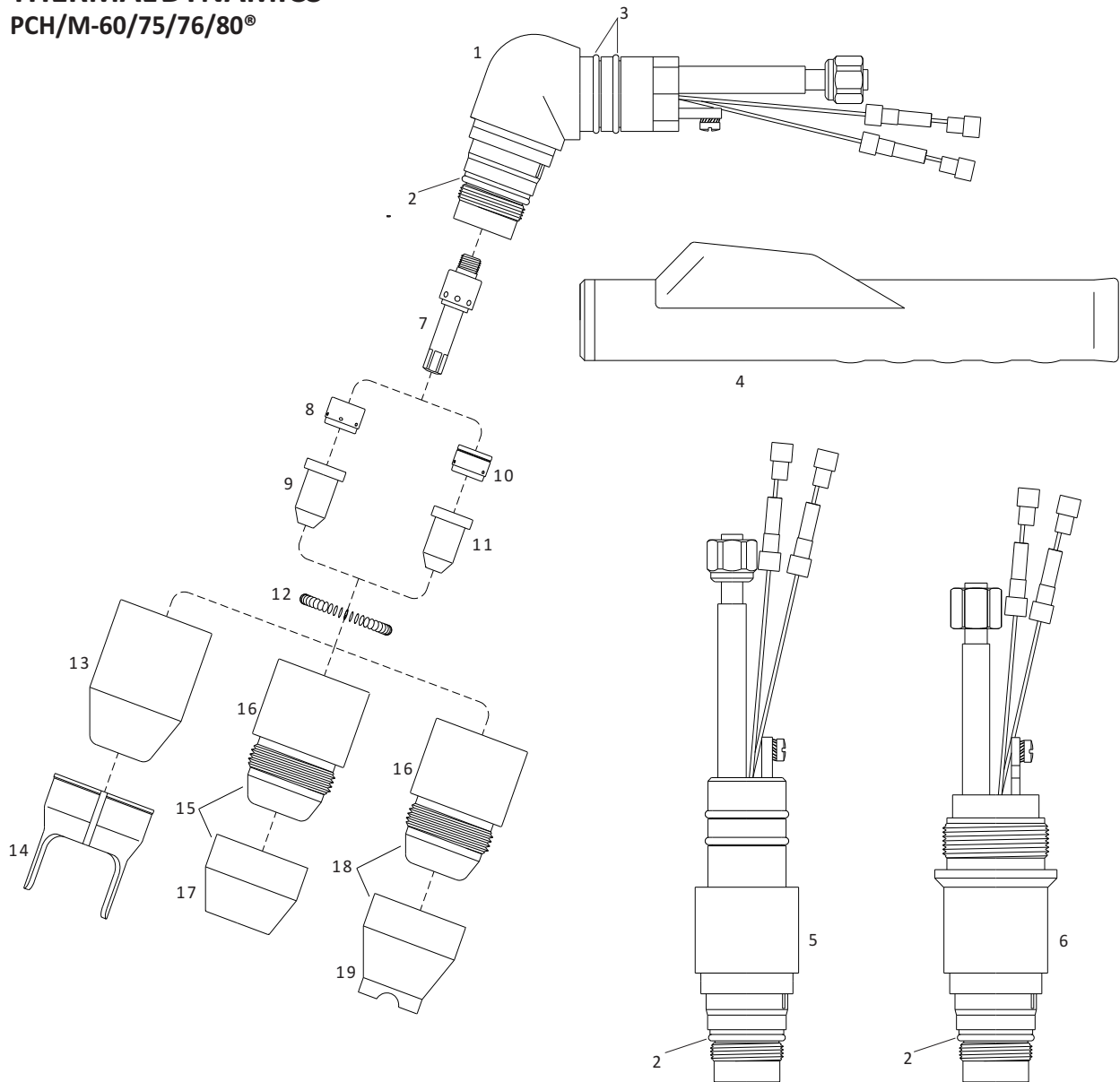
PCH-25/26/28/38®

PCH/M-35/40®



| No. | Ref. | Code | Description | No. | Ref. | Code | Description |
|-----|--------|----------|---------------------------|-----|--------|---------|-------------------------------|
| 1 | 9-8055 | 07037 | 70° Torch head | 6 | 9-6002 | 51292 | Tip Gouging Groove Air |
| | 9-5807 | 07035 | 70° Torch head | 7 | 9-6001 | 51291 | Tip Drag Cut Air |
| 1a | 9-8053 | 07038 | 180° Torch head | | 9-4476 | 51286 | Tip Air |
| ns | 9-7833 | 07215 | Machine handle | 8 | 9-6506 | 52523/D | Electrode Long Life |
| 2 | 8-0533 | 07100.53 | O-Ring | | 9-6506 | 52523 | Electrode Long Life OEM style |
| 3 | | 07103 | Handgrip with microswitch | 9 | 9-6507 | 60051 | Gas distributor Long Life |
| 4 | 9-6006 | 52519/D | Electrode | 10 | 9-6500 | 51288 | Tip - Standoff Long Life |
| | 9-6006 | 52519 | Electrode OEM style | 11 | 9-6501 | 51289 | Tip - Drag Long Life |
| 5 | 9-6007 | 60050 | Gas distributor | 12 | 9-6003 | 60347 | Shield cap |
| 6 | 9-6000 | 51290 | Tip 35A Air | | | | |

THERMAL DYNAMICS® PCH/M-60/75/76/80®



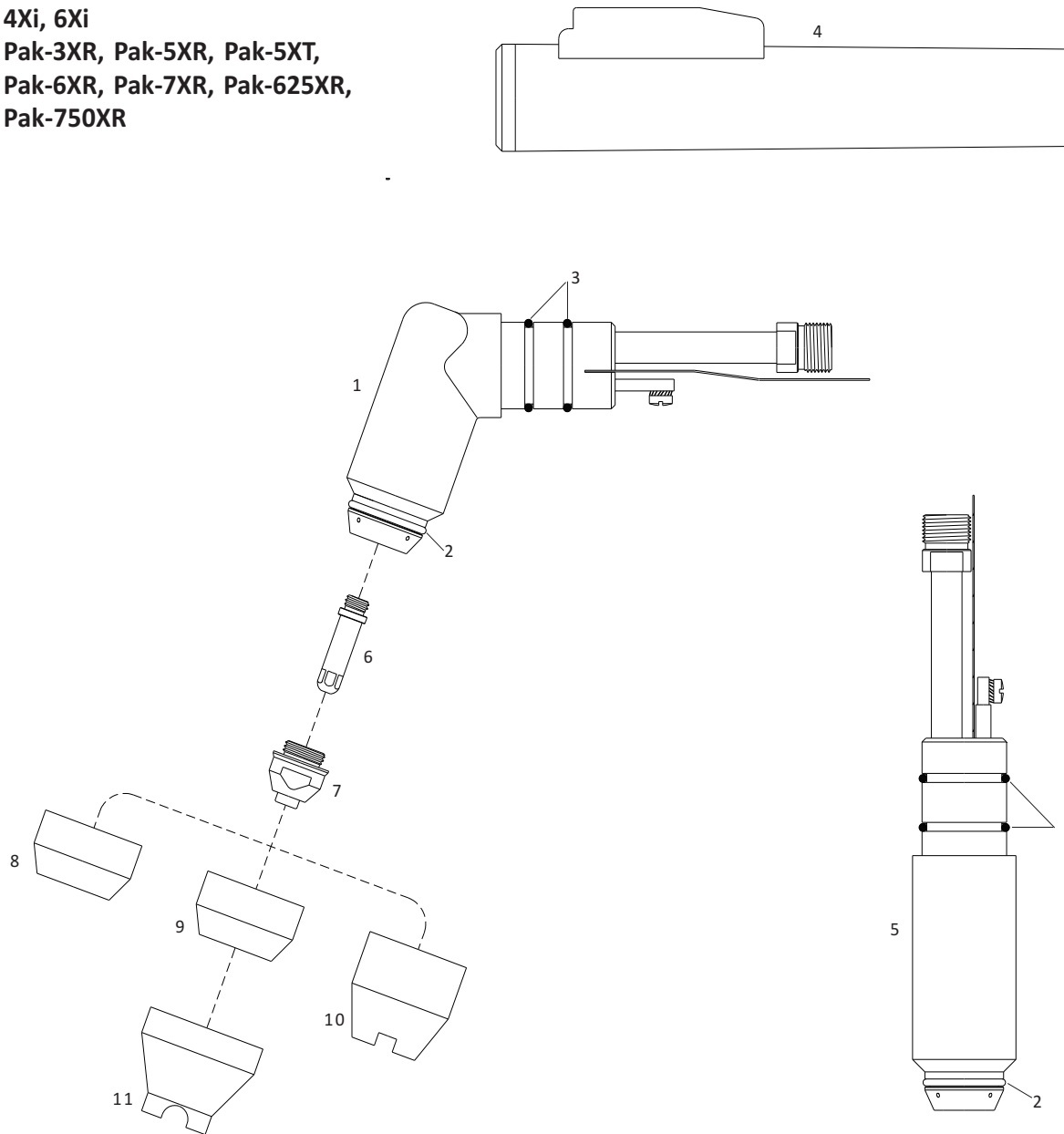
| No. | Ref. | Code | Description | No. | Ref. | Code | Description |
|-----|---------|----------|-----------------------------------|-----|---------|----------|---------------------------------------|
| 1 | 9-8075 | 07077 | 70° Torch head | 9 | 9-7726 | 51297.13 | Tip \varnothing 1.24 - .049 60A |
| | 8-7510 | 07075 | 70° Torch head | | 8-7505 | 51298 | Tip \varnothing 1.32 - .052 70A |
| 2 | 8-0532 | 07300.60 | O-Ring (shield cap) | | 9-7728 | 51298.14 | Tip \varnothing 1.39 - .055 80A |
| 3 | 8-0533 | 07100.53 | O-Ring (handle) | 10 | 8-7508 | 60056 | Gas distributor gouging |
| 4 | | 07106 | Handgrip with microswitch | 11 | 8-7506 | 51299 | Tip gouging \varnothing 1.86 - .073 |
| 5 | 9-8073 | 07078 | 180° Torch head | 12 | 9-7501E | 60442 | Coil spring |
| ns | 9-7833 | 07215 | Machine handle | 13 | 8-7500 | 60440 | Shield cap |
| 6 | 8-7512 | 07076 | 180° Torch head | 14 | 8-7575 | 60444 | Double pointed spacer |
| ns | 9-5637E | 07115 | Machine handle | 15 | 8-7496 | 60446 | Shield cap Maximum Life |
| 7 | 8-7502 | 52526/D | Electrode | 16 | 8-7498 | 60441 | Shield cap body |
| 8 | 8-7501 | 60055 | Gas distributor | 17 | 8-7497 | 60447 | Heat shield (copper) |
| 9 | 8-7503 | 51296 | Tip \varnothing 0.99 - .039 35A | 18 | 8-7507 | 60445 | Crown shield cap assembly |
| | 8-7504 | 51297 | Tip \varnothing 1.17 - .046 55A | 19 | 8-7499 | 60443 | Crown shield cap copper |

THERMALDYNAMICS®

PCH/M-51®

4Xi, 6Xi

Pak-3XR, Pak-5XR, Pak-5XT,
Pak-6XR, Pak-7XR, Pak-625XR,
Pak-750XR



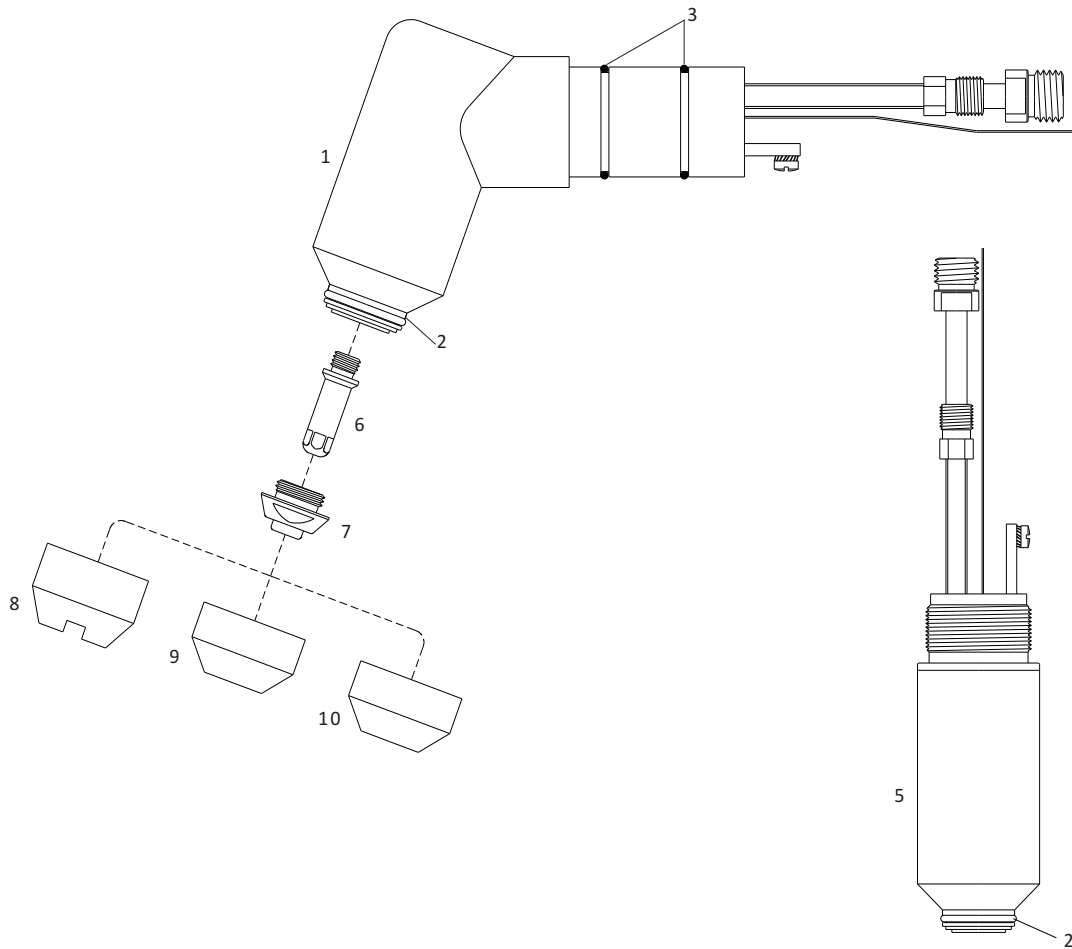
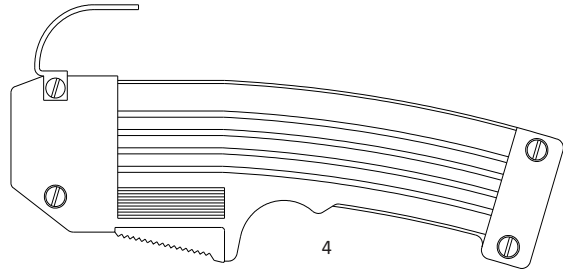
| No. | Ref. | Code | Description | No. | Ref. | Code | Description |
|-----|--------|----------|---------------------------|-----|--------|----------|--------------------------------------|
| | 2-2860 | 07120 | Hand torch 25' , 7.5m | 7 | 9-5718 | 51117 | Tip \varnothing 0.96 - .038 10/40A |
| | 2-2861 | 07130 | Hand torch 50' , 15m | | 9-5631 | 51115 | Tip \varnothing 1.10 - .043 10/60A |
| 1 | 9-5635 | 07100 | 70° Torch head | | 8-3321 | 51115.12 | Tip \varnothing 1.20 - .047 65A |
| 2 | 8-5525 | 02000.60 | O-Ring (shield cap) | | 9-5724 | 51116 | Tip gouging \varnothing 2 - .078 |
| 3 | 8-0533 | 07100.53 | O-Ring (handle) | 8 | 9-5630 | 80010 | Shield cap Ceramic |
| 4 | | 07103 | Handgrip with microswitch | 9 | 8-2159 | 60416 | Shield cap Phenolic std. |
| 5 | 9-5634 | 07110 | 180° Torch head | 10 | 8-5526 | 80011 | Shield cap Crown Ceramic |
| 6 | 9-5633 | 52517 | Electrode | 11 | 9-5779 | 60341 | Shield cap Crown |

THERMAL DYNAMICS®

PCH/M-52®

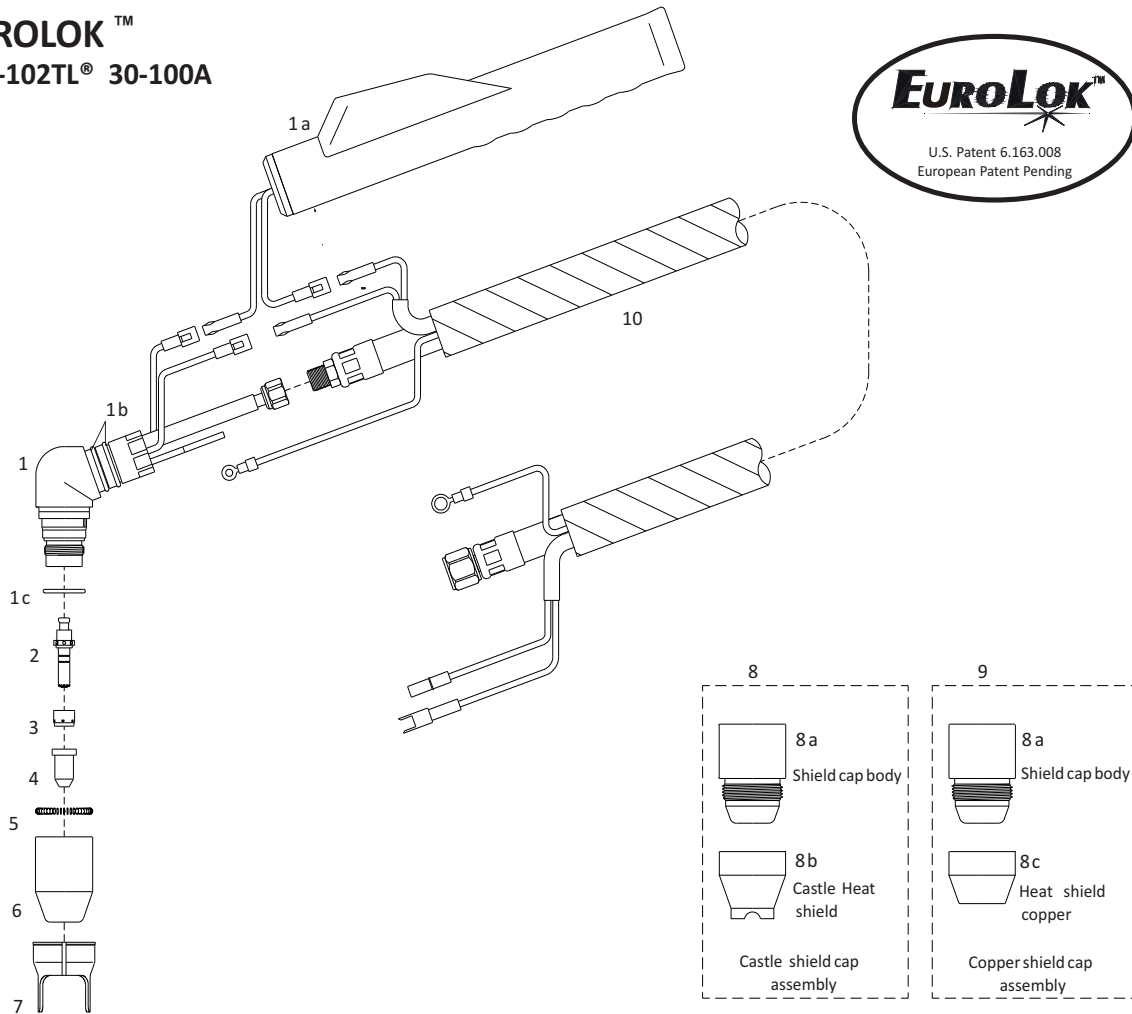
Pak-5XR*, Pak-6XR*, Pak-7XR,
Pak-8XR, Pak-10XR,
Pak-625XR*, Pak-750XR*
Pak-1000XR, Pak-1250XR

* DUAL GAS



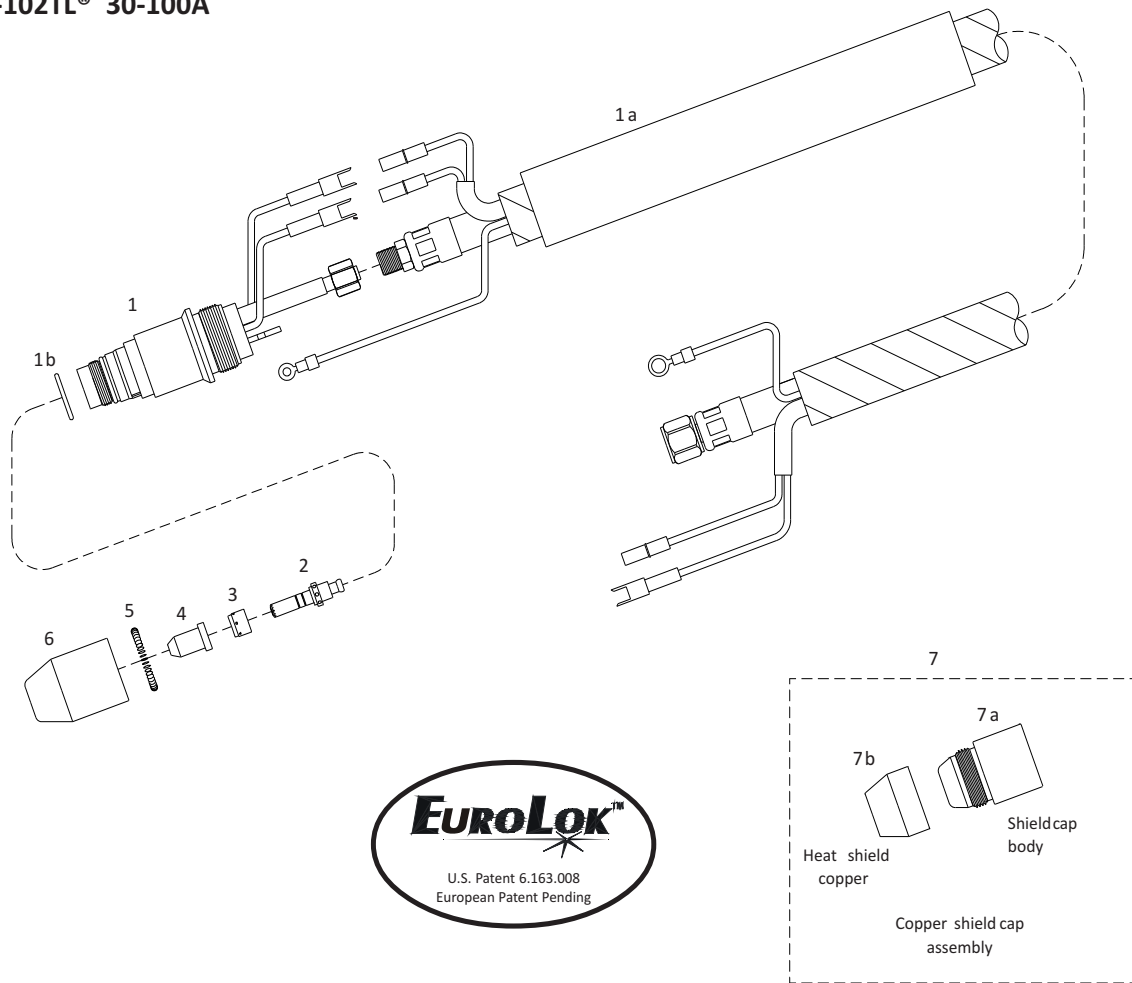
| No. | Ref. | Code | Description | No. | Ref. | Code | Description |
|-----|---------|----------|---------------------------|-----|--------|----------|------------------------------------|
| | 2-2936 | 07220 | Hand torch 25', 7.5m | 7 | 9-5702 | 51180 | Tip \varnothing 0.90-.035 35A |
| | 2-2937 | 07230 | Hand torch 50', 15m | | 9-5618 | 51181 | Tip \varnothing 1.10-.043 45/55A |
| 1 | 9-5642 | 07200 | 70° Torch head | | 9-5707 | 51185 | Tip \varnothing 1.20-.047 60/70A |
| 2 | 8-5525 | 02000.60 | O-Ring (shield cap) | | 9-5782 | 51185.13 | Tip \varnothing 1.32-.052 80A |
| 3 | 8-0536 | 07200.50 | O-Ring (handle) | | 9-5708 | 51186 | Tip \varnothing 1.50-.059 105A |
| 4 | 9-5644E | 07307 | Handgrip with microswitch | 8 | 9-5694 | 80017 | Shield cap Crown Ceramic |
| 5 | 9-5643 | 07210 | 180° Torch head | 9 | 9-5781 | 60418 | Shield cap Phenolic std. |
| 6 | 8-3331 | 52565 | Electrode Air | 10 | 9-5617 | 80015 | Shield cap Ceramic std. |
| | 9-5619 | 52565/N | Electrode Air Plated | | | | |

EUROLOK™ PCH-102TL® 30-100A



| No. | Ref. | Code | Description | No. | Ref. | Code | Description |
|-----|----------|----------|--|-----|---------|---------|---|
| 1 | 9-8405EL | 07902 | Hand torch head | 4 | 8-7506 | 51299 | Tip gouging, Air/N2 ϕ 1.86 - 0.073 |
| 1a | | 07106E | Handle with microswitch | 5 | 9-7501E | 60442 | Coil spring |
| 1b | 8-0533 | 07100.53 | O-Ring | 6 | 8-7500E | 60440 | Shield cap (including item#5) |
| 1c | 8-0532 | 07300.60 | O-Ring | 7 | 8-7575 | 60444 | Double pointed spacer |
| 2 | 9-8402EL | 52527 | Electrode Air/N2 | 8 | 8-7507E | 60445 | Castle shield cap assembly (including item #5, 8a, 8b) |
| 3 | 8-7501EL | 60055/EL | Gas Distributor cutting | 8a | 8-7498E | 60441 | Shield cap body (including item#5) |
| | 8-7508EL | 60056/EL | Gas Distributor gouging | 8b | 8-7499 | 60443 | Castle Heat shield (copper) |
| 4 | 9-8406 | 51298.15 | Tip 100A cutting, Air/N2 ϕ 1.50 - 0.059 | 8c | 8-7497 | 60447 | Heat shield (copper) |
| | 9-7728 | 51298.14 | Tip 80A cutting, Air/N2 ϕ 1.39 - 0.055 | 9 | 8-7496E | 60446 | Copper shield cap assembly (including item # 5, 8a, 8c) |
| | 8-7505 | 51298 | Tip 70A cutting, Air/N2 ϕ 1.32 - 0.052 | | 07062TL | | Hand torch, 6m - 20' |
| | 9-7726 | 51297.13 | Tip 60A cutting, Air/N2 ϕ 1.24 - 0.049 | | 07072TL | | Hand torch, 12m - 40' |
| | 8-7504 | 51297 | Tip 50A cutting, Air/N2 ϕ 1.17 - 0.046 | 10 | | 07064TL | Lead assembly, 6m - 20' |
| | 8-7503 | 51296 | Tip 30/40A cutting, Air/N2 ϕ 0.99 - 0.039 | | | 07074TL | Lead assembly, 12m - 40' |

EUROLOK™ PCM-102TL® 30-100A



| No. | Ref. | Code | Description | No. | Ref. | Code | Description |
|-----|----------|----------|---|-----|---------|---------|---|
| 1 | 9-8403EL | 07903 | Machine torch head | 5 | 9-7501E | 60442 | Coil spring |
| 1a | 8-0532 | 07300.60 | O-Ring | 6 | 8-7500E | 60440 | Shield cap (including item#5) |
| 1b | | 07215 | Fiberglass positioning tube | 7 | 8-7496E | 60446 | Copper shield cap assembly (including item# 5, 7a, 7b) |
| 2 | 9-8402EL | 52527 | Electrode Air/N2 | 7a | 8-7498E | 60441 | Shield cap body (including item#5) |
| 3 | 8-7501EL | 60055/EL | Gas Distributor cutting | 7b | 8-7497 | 60447 | Heat shield (copper) |
| | | 8-7508EL | Gas Distributor gouging | | | 07082TL | Machine torch, 6m - 20' |
| 4 | 9-8406 | 51298.15 | Tip 100A cutting, Air/N2 ϕ 1.50 - 0.059 | | | 07092TL | Machine torch, 12m - 40' |
| | 9-7728 | 51298.14 | Tip 80A cutting, Air/N2 ϕ 1.39 - 0.055 | | | 07084TL | Lead assembly, 6m - 20' |
| | 8-7505 | 51298 | Tip 70A cutting, Air/N2 ϕ 1.32 - 0.052 | | | 07094TL | Lead assembly, 12m - 40' |
| | 9-7726 | 51297.13 | Tip 60A cutting, Air/N2 ϕ 1.24 - 0.049 | | | | |
| | 8-7504 | 51297 | Tip 50A cutting, Air/N2 ϕ 1.17 - 0.046 | | | | |
| | 8-7503 | 51296 | Tip 30/40A cutting, Air/N2 ϕ 0.99 - 0.039 | | | | |
| | 8-7506 | 51299 | Tip gouging, Air/N2 ϕ 1.86 - 0.073 | | | | |